



The Tees Railway Path

From Middleton-in-Teesdale take Bridge Street (B6277) and cross the County Bridge over the River Tees, follow a finger post on the south side of the bridge using a small wooden gate. Descend the steps into the field. Follow the footpath along the river bank to Step Ends Farm. Continue along the waymarked path up through fields to Lonton ($\frac{3}{4}$ of a mile south of Middleton-in-Teesdale, on the B6277).

There is a stile leading onto the B6277 on a sharp bend, be very careful of traffic here. Walk 50 yards along the road towards Mickleton. A gate is signposted, this directs you up through a field to a steep stile and the Tees Railway Path. Once on the path, walk for approximately $1\frac{1}{4}$ miles towards Mickleton. From the car park and picnic area at Mickleton (the former Mickleton Station) you may reach the village centre via Bail Hill Road or continue for 2 miles along the path to reach Romaldkirk, walking down Fell Lane to the village centre.

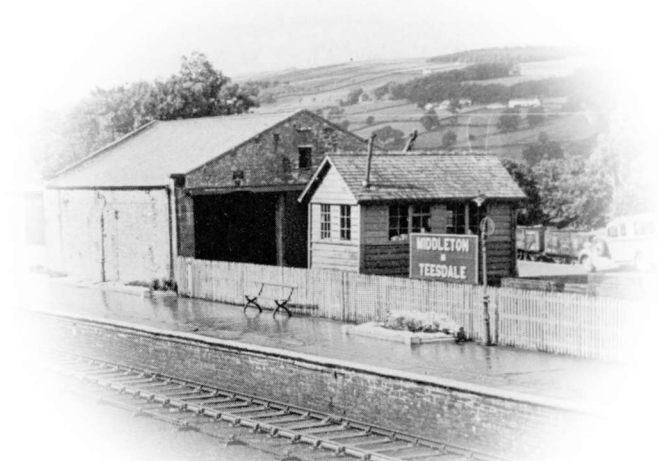
To walk from Romaldkirk Village Green at the crossroads, cross the B6277 into Fell Lane (there is a small brown sign for the Tees Railway Path). You will pass the former railway buildings on your right. On your right there is a sign post for the path, you can then walk towards Mickleton and Middleton-in-Teesdale reversing the above directions.

The walk from Middleton-in-Teesdale to Mickleton is approx. 2 miles and to Romaldkirk it is 4 miles. The bus journey from Middleton to Romaldkirk takes 15 minutes. The bus stops are marked 1 for Middleton, 2 For Mickleton and 3 for Romaldkirk on the map overleaf.

walkmiddleton.info



The Tees Railway Path



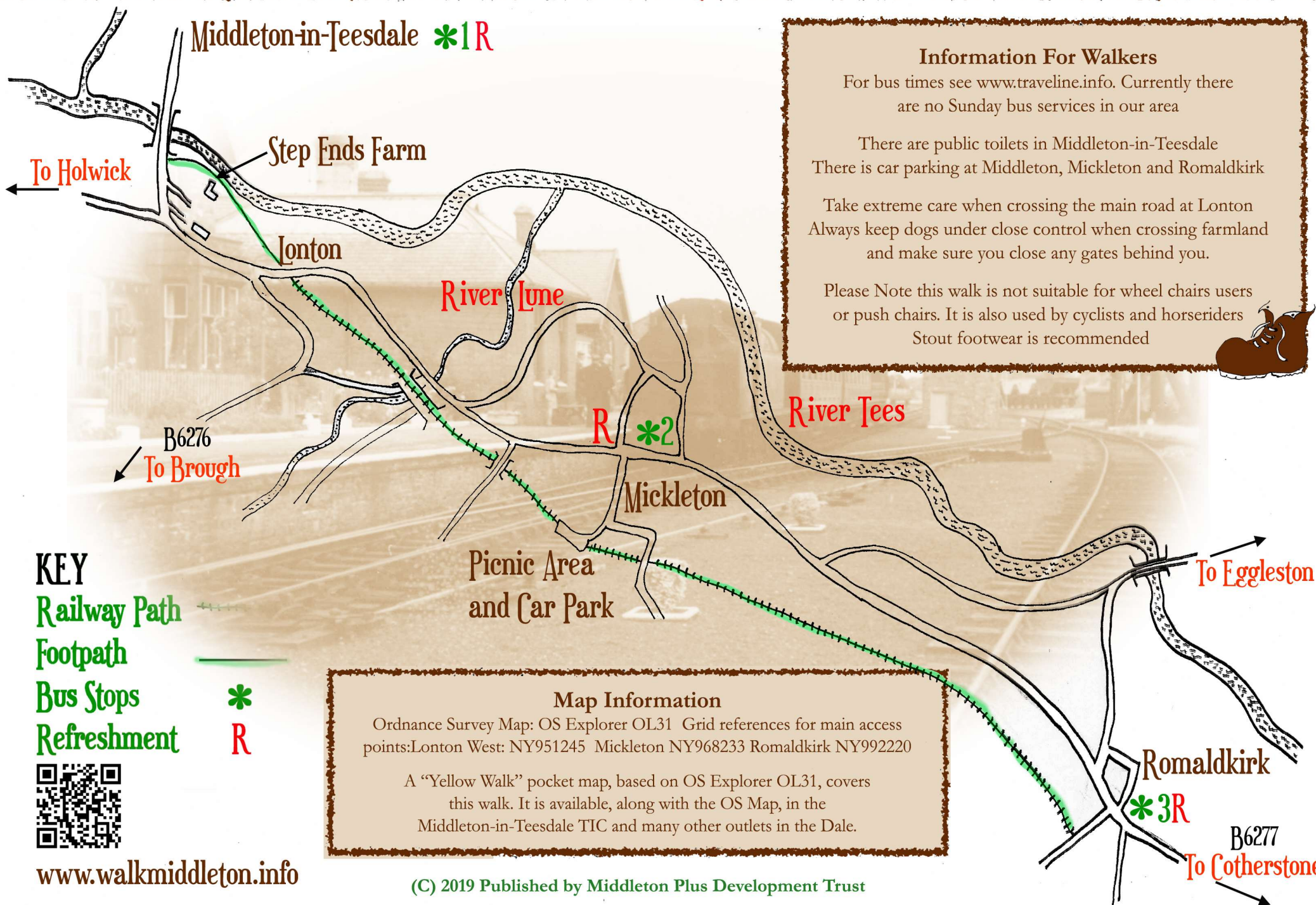
The Tees Valley Railway route ran from Barnard Castle to Middleton-in-Teesdale although it was originally planned to extend to Alston. Opened by The Tees Valley Railway Company, it reached Middleton-in-Teesdale in 1868. It was taken over by the North Eastern Railway Company in 1882. The line was closed in 1964, but is now part of an almost unbroken walk with fine views all along the route. Between Middleton-in-Teesdale and Romaldkirk the Railway Path passes through wonderful Teesdale scenery. Taking walkers through farm land bordered by the former railway line's rich hedgerows, this is a haven for birdlife, wild flowers and local wildlife.

For more information about the Railway Walk visit walkmiddleton.info



A Walk Through Time





Information For Walkers

For bus times see www.traveline.info. Currently there are no Sunday bus services in our area

There are public toilets in Middleton-in-Teesdale
There is car parking at Middleton, Mickleton and Romalldkirk

Take extreme care when crossing the main road at Lonton
Always keep dogs under close control when crossing farmland and make sure you close any gates behind you.

Please Note this walk is not suitable for wheel chairs users or push chairs. It is also used by cyclists and horseriders
Stout footwear is recommended



KEY

Railway Path

Footpath

Bus Stops

Refreshment



Map Information

Ordnance Survey Map: OS Explorer OL31 Grid references for main access points: Lonton West: NY951245 Mickleton NY968233 Romalldkirk NY992220

A "Yellow Walk" pocket map, based on OS Explorer OL31, covers this walk. It is available, along with the OS Map, in the Middleton-in-Teesdale TIC and many other outlets in the Dale.

www.walkmiddleton.info

(C) 2019 Published by Middleton Plus Development Trust